



# THE ROLE OF TEAM RECTOR OUZEL VALLEY TEAM MINISTRY



## VICAR of ALL SAINTS LEIGHTON BUZZARD



*360° views of the Ouzel Valley as seen from  
the All Saints Church spire*

## INTRODUCTION

Leighton Buzzard is a thriving, rapidly expanding town in the southwest of Bedfordshire giving exciting opportunities for the churches as the town develops. It has excellent transport links. All Saints is at the centre of town life and the spire of the church is visible from all approaches to the town.

Worship at All Saints is vibrant and exciting, with a variety of services catering for all age groups and tastes in worship style which find cohesion within the liberal catholic tradition. According to the Lord Lieutenant, All Saints is well-known for its outstanding music. As in any parish though, worship within the church building is not the whole story. Pastoral support for the whole town is central to the role of the vicar and the ministry support team.

Along with its conjoined twin Linslade and a number of surrounding villages, the parish of All Saints forms the Ouzel Valley Team Ministry.

### What are we here for?

To continue to show the love of God in our community by putting the Gospel at the heart of community and civic life;

To continue to nourish Christians in their growth in faith;

To bring others to faith through the work and witness of the church.

### What will you be here for?

To enable and lead, with diplomacy and determination, the mission of the Team Churches;

To help us to review and refresh the vision of “Team” collaboration across the Ouzel Valley Team;

To help us to evolve as we meet the many challenges of the future, particularly as the town grows;

To understand the community, assess what is required and using creative input help us to reach elements of society not already embraced;

To keep what is already good fresh;

To continue to use the Church as a resource to further our educational links.

### What do we all need to do next?

Develop our varied menus of worship to meet the needs of differing age ranges;

Strengthen links with schools;

Encourage those on the fringe to become more engaged with the worshipping life of the Church;

Attract new people of all ages from our growing town to become part of our diverse congregation.



*Leighton Buzzard Market in full swing*



*Lunch Club*



## THE TEAM RECTOR'S ROLE

The Team, which was formed in 2008, currently consists of:

- **You** (perhaps), the Rector, who is Vicar of All Saints, Leighton Buzzard
- Rev Noel McGeeney, Vicar of St Leonard's, Heath and Reach, St Nicholas, Hockliffe and St Michael's, Eggington
- Rev Dr Bernard Minton, Vicar of St Barnabas, Linslade
- Rev Steve Marsh, Pioneer minister at The Church of the Good Shepherd and Vicar of St Michael & All Angels, Billington
- 5 PTO's who contribute differently to the liturgical life of the team
- 11 lay Readers
- A potential future Curate. All Saints enjoys its status as a training parish.



Each Team Vicar has delegated responsibility for specific parishes within the team as well as specific subject areas. The Team Vicars mostly work in their geographical areas, but all members of the team share in the cure of souls and are expected to work collaboratively particularly in covering weddings & funerals, as well as sharing team-wide foci such as Youth Work, Spiritual Growth, and Adult Education.

Each Parish is separate with its own PCC and each has developed a Mission Action Plan on the three themes in the Diocesan Vision 'Living God's Love' – Going Deeper into God, Transforming Communities and Making New Disciples.

Organisationally, the Team Rector has co-ordinated service rotas across the team. The Office Manager co-ordinates all the arrangements for weddings and funerals across all the churches, as well as picking up initial requests for baptisms. This post is funded by a levy on the PCC element of the fees. None of this administration falls onto the clergy!

The Benefice is in the Dunstable Deanery, of the Bedford Archdeaconry of the Diocese of St Albans. The current Rural Dean and Lay Chair are from parishes in the Team Ministry.

## THE VICAR'S ROLE

In addition to the tasks normally expected of the incumbent we would like to highlight the following points:

The worship pattern of All Saints is rich and varied, and the Vicar needs to be at ease with many different styles within a broadly Anglo-Catholic tradition;

All Saints is at the centre of the town life and is the focus of special services for the whole community. This civic role is a key element in our outreach to the Town;

Also because of the historic nature of the Church there are a number of Charities of which the Vicar is an ex-officio Trustee;

- The most important role is as a trustee of the Pulford Trust (and Governor of Pulford School).
- Trustee of the Leighton Buzzard United and Almshouse Charities, which manages 16 alms-houses originally founded in the early 17<sup>th</sup> century by the Wilkes family.
- Trustee of All Saints Preservation Trust an independent charity set up solely to raise and manage funds for the preservation of All Saints parish church.

All of these charities have substantial assets as a result of recent land sales or Legacies. There is also a small charitable trust for use at the discretion of the Vicar.

There is salaried support from the Office Manager who also acts as PA to the Rector, and a Head Verger who does much of the co-ordination of services and manages the use of the building. Many other volunteers cover a multitude of activities that take pressure away from the clergy.

# VICAR OF ALL SAINTS, LEIGHTON BUZZARD

## WORSHIP

### SERVICE PATTERN OF ALL SAINTS (Common Worship unless otherwise stated)

Every Sunday 8:00am **Holy Communion** (said) with a short address. Average congregation of 20, who tend to be older.

9:15am **Parish Eucharist** is our main service. It is a sung service with incense, vestments, modern catholic ceremonial and sermon. Through this we endeavour to create rich, prayerful and engaging worship. The service is attended by all ages with an average attendance of 120. Younger children go out to Sunday Saints and return for a show-and-tell before the end of the service.

1<sup>st</sup> Sunday 11:15am **Messy Mass**. A simple communion service in the Messy Church format with craft, modern music supported by a music group and video input. This has proved very successful with an average attendance of about 150 but can vary considerably. Thanks are due to our close links with Pulford School and the efforts of one of our readers.

3<sup>rd</sup> Sunday 11:15am **All Age Communion**. A simple and more straightforward version of the above. Average attendance around 70 but again varies considerably.

October 2018 will see the start of a new venture for us - Forest Church. At the turn of each season we will take the All Age Worship outside to seek the revelation of God in and through His creation.

2<sup>nd</sup> & 4<sup>th</sup> Sundays 11:15am **Baptisms**. In 2017 there were 54 baptisms at All Saints.

1<sup>st</sup> Sunday 6:00pm **Choral Evensong** (BCP). Attendance about 20.

3<sup>rd</sup> Sunday 6:00pm **Choral Evensong** (BCP), often with settings and followed by Benediction in the Chancel. Attendance around 20.

2<sup>nd</sup>, 4<sup>th</sup> & 5<sup>th</sup> Sundays 6:00pm Said **Evening Prayer** (BCP) in the Chancel. Attendance very variable up to 12.

Daily 9:00am Said **Morning Prayer** in St Hugh's Chapel. On Wednesdays, the Team Chapter attends.

4:30pm Said **Evening Prayer** in St Hugh's Chapel. Clergy normally attend.

Tuesday 7:30pm **Holy Communion**, in St Hugh's Chapel. On the 3<sup>rd</sup> Tuesday this includes the Ministry of Healing.

Wednesday 12noon **Holy Communion** in the Chancel or South Transept. On the first Wednesday the BCP is used.

Thursday 10:00am **Holy Communion** with hymns and a short address. Attendance up to 30 of the older generation.

Saturday 9:00am **Holy Communion** in St Hugh's Chapel.



## MUSIC

All Saints has for many years had a strong musical tradition and believes in the power of music to enhance worship. We are blessed with an excellent Director of Music (also Organist) and a fine choir, affiliated to the RSCM. Young singers train through the RSCM Voice for Life scheme, at which they have achieved much success in recent years. At present we have 17 trebles (both boys and girls) of school age and 19 adults.

Funding is available for organ and choral scholars.

### The choir sings:

- at the 9:15 Parish Eucharist every Sunday during term time
- Choral Evensong twice a month on the first and third Sundays during term time
- Various Civic Services
- and at a number of special services during the year, especially around Christmas and Easter.

The Director of Music also puts together a small musical group who come together to play at the more informal 11:15 All Age Services which often include modern worship songs.

Every two years, during the summer, the choir sings the services at an English cathedral for a week or a long weekend. In recent years they have sung at Lincoln, Hereford, Exeter & St Albans. In the intervening years, they usually make a Saturday day trip to a local cathedral to sing Evensong (Coventry and Southwark in recent years).

In 2018 they sang at Wells cathedral using a broad and varied repertoire from Byrd to Howells, and including one service showcasing music composed by our home-grown composer, Philip Stopford.

In addition, they might put on a concert or sing more ambitious music for special occasions, such as the Haydn Nelson Mass at the Midnight Mass on Christmas Eve. And just before Holy Week this year they gave two fully-staged performances of Jesus Christ Superstar, performed for free to the community as an outreach activity.



*All Saints Choir*



### Jesus Christ Superstar – What the critics said

*“The standard of the performance – the orchestra, the singing, the acting and the behind-the-scenes organisation were way in advance of what you might reasonably expect of a mid-sized market town such as ours.”*

*“I haven’t enough superlatives.”*

*“A very special evening that really set up well for Holy Week and Easter.”*



## SUPPORT FOR MINISTRY

All Saints is fortunate in having a range of ministerial support, outside the stipendiary clergy. Lay ministers often act as deacon and sub-deacon at the Parish Eucharist. There are four licensed Readers and three with PTO. A number of people have been formally recognised in the Parish for their gifts in preaching and teaching and they make up the All Saints College of Preachers. There are also three retired priests who give of their time depending on their other commitments. Lay people are also involved in administering the chalice, reading, leading intercessions and taking home communions. Seven lay ministers are authorised to lead 'Public Worship with Communion by Extension.'

The church is also blessed with a number of small teams of lay people who are involved in both Baptism and Marriage Preparation, as well as visiting bereaved families.

Previous incumbents have been very encouraging and supportive of lay ministry in all its forms and have ensured that there is scope for gifts to be used. We would want a new priest to continue with this.



## CHILDREN AND YOUTH WORK



Sunday Saints is the name for the children's activity during the Parish Eucharist. Numbers are extremely variable. Messy Mass and All Age worship include a much larger number of children, particularly in the younger age range. An annual Holiday Club is held on 5 mornings in August, and attracted around 150 children this year. We also engage children with the Gospel message through the choir.

For older children, the ACTIVE youth group - A Club That Is Very Exciting, runs every other Sunday evening during term-time for 11-18 year olds. It provides an opportunity for this group to socialise in a safe and caring environment. Whilst predominantly made up of existing church-goers, youngsters from outside the church community are welcome. We provide a range of games, creative crafts and activities for the group, interspersed with short informal faith-oriented talks and services. The group currently averages around 15 children.

We have recently introduced Toddler Time for parents and carers of under 5's for one morning a week. They share refreshments and conversation and a simple Bible Story. One of the challenges which the PCC recognises is how we connect with older children and teenagers who are not involved in other ways. We see this as an important part of the new Vicar's role.

## THE BUILDING

All Saints, though we say it ourselves, is really rather magnificent. Moreover we have recently completed an immense program of restoration (7 phases, 16 years, £2 million).

All Saints Preservation Trust is a separate charity outside the church. Its focus is on the maintenance of the building and facilitated much of the funding required for this restoration work to be done.

Physically, the building is now in very good shape, although with a building of this age there is always more to do.



*Nave*



*Chancel*



*St Hugh's Chapel*



*South Transept*

There are four principal worship spaces:

- The nave, with the high altar now placed under the crossing. This is used for all our major services.
- A fine chancel, which is unusually large and furnished like a cathedral choir. Evensong is sometimes held here, and some weddings.
- An intimate upstairs chapel (the St Hugh chapel), used for morning and evening prayer and the small Eucharistic services.
- The south transept, a beautiful, airy space used for the Wednesday Eucharist.

The church tower houses a peal of 12 bells + a sharp 2<sup>nd</sup> and an active group of ringers. The bells are rung every Sunday and at weddings as requested.

The PCC recently held a 'blue sky' morning where the use and possible future development of the building was considered. This is work in progress but will be something for the new incumbent to get involved with and take forward with the active assistance of the fabric committee.





All Saints Church is accessible 7 days a week. Here is a flavour of what goes on:-



*Baptism Preparation*



*Bereavement Cafe*



*Litter Picking & Bee Keeping in the well-kept Churchyard*



*Ringing chamber of 12 bells + a sharp 2nd*



*Summer Fete in the vicarage Gardens*



*School Trails*



*Marriage Preparation*



*Mothers' Union repairing church kneelers*



*Christmas Crib*



*Easter Garden*



*PCC at work*



## CIVIC LINKS AND OUTREACH



*Remembrance service*

Due to its size and position within the town, All Saints is used for many Civic and Community events. Recent events have included:

- The Mayor's Carol Concert
- The Civic Service
- A public meeting for the Low Carbon Town Initiative
- District Scouts St George's Day Service
- The Royal British Legion Festival of Remembrance (the War Memorial is by the Church)
- Numerous concerts, mostly for charity, by the Leighton Linlade Gala Orchestra, Oxjam, Heath Band, Grand Union Community Choir, South Beds Concert Band and the Festival Singers to name but a few.

The Church is open on town festival days such as Living History Day as well as on May Day and Carnival Day. All Saints also has its own Partners in Mission Group as well as Mothers' Union who raise funds for distribution to deserving causes both local, national & international. The Church also hosts many school services as well as providing Trails (Easter/Pentecost/ Harvest/Christmas) for schools and the public to wander round.

The Young Adults group attracts a number of people who are not regular church attenders.

We host a monthly lunch club for older people which caters for around 50 people, many of them not regular attenders.



*'Young' adults, out and about locally*

## THE SPIRE COFFEE SHOP



*Coffee Shop - Tuesday, Friday & Saturday.  
It encourages all volunteers!*

The Coffee Shop was established after the fire of 1985 and was set up to be the servant of the Church by providing:-

- A pleasant friendly place for visitors to the Church to have light refreshments
- An informal meeting place for Church members and friends
- A service to the wider community and a possible "way in" to church for its customers
- A means of income for the church.

It is manned by volunteers from All Saints and other churches in the team, which helps to build relationships amongst members of all congregations, while also providing some financial support for churches across the team (Non-All Saints helpers 'earn' money for their churches). The Coffee Shop provides enough funds to pay 1/3 of All Saints parish share.

## PULFORD SCHOOL

Pulford school was founded in 1710 by Joshua Pulford, the Vicar of All Saints, to make provision for poor children to be educated in Leighton Buzzard. In 1883 Pulford school came to the site where it still stands, bordering on the church grounds. Over recent years, the building has been extended to meet the high demand from families in the town, and surrounding villages who select a church school education for their children.

There is no catchment area; admissions for an annual intake of 45 children between the ages of 2 and 9 are determined by faith—based criteria. The school has been oversubscribed for some years. Currently the OFSTED and SIAMS ratings are outstanding and the school also holds the REQM at Gold level. The school works closely with the parish, and holds services in the church for the major festivals where the children receive an age appropriate message. A wide range of worship styles is employed that mirrors the various styles of worship used on a Sunday at the Church. The Clergy currently lead worship at Pulford each Wednesday while school staff lead daily worship. Many of the staff, including the Leadership Team are practising Christians.



We are excited about continuing the close relationship between school and church, as well as looking forward to new and exciting services and projects.

Through links with the school, All Saints is able to engage successfully with other Lower and Middle Schools in the town. Two Year 4 Carol Services are attended by all the town's lower schools. Seasonal church trails have also been devised and for instance, over 700 children came into church during the week after Pentecost for the 'Thy Kingdom Come' trail. Close links are maintained with our neighbour, Leighton Middle School.



*Easter and Harvest Church Trails*



## FINANCE

With careful management we have been able to maintain a small surplus for the last three years, and have always paid our parish share in full.

10% of All Saints planned giving is donated to charities which our Partners in Mission group manage.

All Saints Church owns one property, which historically has been used to house a curate when in post. There is another small house, lodged in a trust which is currently let for rental income which in turn provides money for maintenance of both properties. Surplus income is transferred annually to the PCC to support the mission of the church.

Annual budgets are set by the Finance Committee (a sub-committee of the PCC) and monitored by them, with regular reports given to the PCC. The full accounts are presented at the APCM. There are a number of restricted Trusts, the income of which is applied for items that fall within their scope.

The financial accounts are up to date and are available on request.

## ECUMENICAL LINKS

The larger churches in the team are members of Leighton Linslade Churches Together, an ecumenical organisation involving seven of the town's churches. LLCT supports a regular range of activities, the most visible of which is the Good Friday walk of witness. There is a procession around the town carrying a cross which finishes at the Market Cross where a short service is held, devised and led by one church. This attracts around 250 people. There are also ministers' fraternals: ten to fifteen of the town's church leaders meet for lunch around four times a year. These are purely social occasions, not business meetings. All in all relations between the churches of Leighton Buzzard are cordial but not close.



*Good Friday walk of witness*

## THE CHURCHYARD

The churchyard is effectively closed, but burial of cremated remains continues. There is provision for names to be carved in remembrance on specially erected large gravestones. The churchyard (and vicarage garden) is a wildlife stronghold, with a wildflower meadow, an area of woodland, a badger sett and more. The excellent Churchyard Group carries out the maintenance.

We recently held a churchyard wildlife day bringing in experts to comb the area and allow the public to enjoy the results. All Saints has recently decided to work towards an Eco Church award. This exercise is led by members of the congregation, and is intended to involve all aspects of church life. (See <https://ecochurch.arochoa.org.uk/> for details.)

We have a very active bee group, who look after 5 hives at the bottom of the churchyard, and sell their honey and other products through the coffee shop.



*Bug hunting on wildlife day*

## THE VICARAGE



Standing next to the church, the Victorian Vicarage is an impressive building in a good state of repair. The property comprises on the ground floor of a hall, study, sitting and dining rooms, kitchen, utility room and a cloakroom. On the first floor there are four bedrooms and a bathroom. There is an attached garage for one car, with access into the house.

Outside, the large gravel driveway at the front has been extended to make a small car park with a gate to the Churchyard. This allows for the parking of several cars and the current practise is for people working at the church to make use of it. There is some potential to expand this area if the incumbent so wishes. There is a large walled garden which the present incumbent has made as easy as possible to maintain.



Traditionally, the Annual Summer Fete is held on the Vicarage lawns in July each year, as are other occasional social events.

It is worth noting that the Diocese has no plans to change the Vicarage.

## PRACTICAL DETAILS



Leighton Buzzard is a growing town with significant present and future housing development. Now largely a commuter town it has excellent communication links, being 40 miles north-west of London; off-peak there are 3 trains an hour to London, one non-stop in 30 minutes as well as an hourly train direct to Clapham Junction and East Croydon. In the other direction, 4 trains an hour go to Milton Keynes (for main-line northbound connections), Northampton and Birmingham. The new junction 11A of the M1 is about 7 miles away and the planned Oxford to Cambridge Expressway will go near the town. Luton Airport is approximately 15 miles and Heathrow 45 miles via the M25. However, as with many expanding towns, the infrastructure of Leighton Buzzard is rather lagging.

Current education provision in the area consists of a three-tier comprehensive system, lower (ages 4-9), middle (ages 9-13) and upper (ages 13-18). This however is likely to be changing in the near future to the more usual 2 tier system. It is only fair to say that the details of this are not clear as yet. Buckinghamshire still has a selective system of education, so some parents choose to send their older children to grammar schools in Aylesbury by taking the 11+



Ouzel Valley Team Ministry

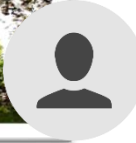
Rev. Bernard Minton



**St. Mary's, Old Linslade**  
Chapel of Ease. Monthly services. Church and open churchyard cared for by active Friends group.



All Saints, Leighton Buzzard



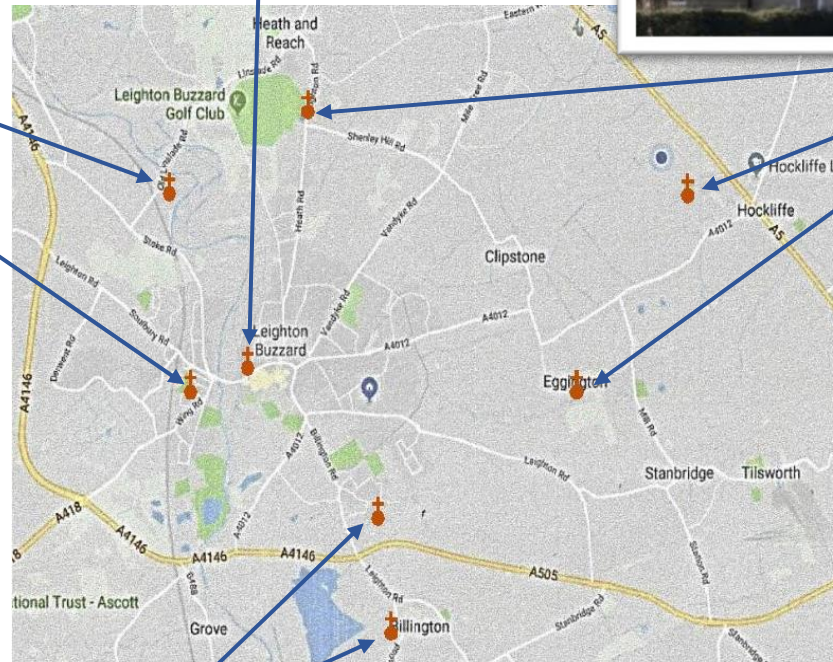
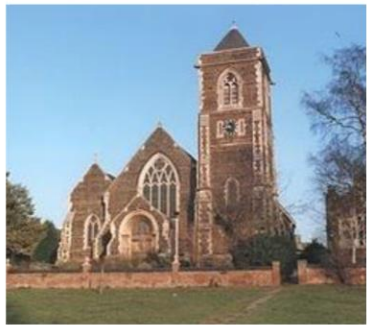
**St Leonard's, Heath & Reach**  
Large village; pop 3,000;  
2 Sunday services + mid-week.  
Congregation 50.



Rev. Noel McGeeney



**St. Barnabas, Linslade**  
Large town church, pop 15,000  
3 Sunday services + mid-week.  
Congregation 100+.



**St. Nicholas, Hockliffe:**  
Small village church; pop 800;  
weekly attendance 10-18.



**St. Michael's, Eggington**  
Small village church in the process of becoming a Chapel of Ease of St. Leonards; pop 300;  
fortnightly service; congregation 10.



**Church of the Good Shepherd, Sandhills**  
4 year-old mission church running in a school serving new estates on south and east of town.  
Weekly attendance 50.

Rev. Steve Marsh



**St Michael & All Angels, Billington**  
Small village church; pop 250; weekly attendance 14-20.

# Ouzel Valley Team Ministry

The Ouzel Valley Team has grown and evolved since its inception 10 years ago. St. Leonard's and St. Barnabas both joined after that first launch, and the Church of the Good Shepherd has been in existence for less than 5 years.

Activities such as confirmation, marriage and baptism preparation are now all run centrally for the whole team; and administration for these and for funerals is largely done by the Office Manager based at All Saints, thus ensuring that venues, clergy, music and so on are always available.

Now that these systems and arrangements are reasonably bedded in, it is widely thought that refreshing the team vision would be timely. There is so much more that could be done to share ministry across the Ouzel Valley, while easing the burdens on both clergy and parish administrators.

Examples might include co-ordinating more youth work, both for teenagers and young adults; improving Team communication; enriching teaching and preaching with more pulpit sharing or swapping ... the wealth of ideas, and the challenge of delivering some of them, is endless.

## Meet the Team

### Rev'd Dr Bernard Minton



Team Vicar of St Barnabas, Linslade since 2008; and with charge of St. Mary's Old Linslade, now a Chapel of Ease. He is also Rural Dean of Dunstable Deanery.

Approximately 45% of the St. Barnabas congregation is over 70, although some young families are being attracted by Messy Church (held quarterly) and a toddler group. Both these activities make use of the attached hall (formerly a Victorian school building).

Ministry Support at St. Barnabas includes a non-stipendiary assistant, Rev'd Wyn Jones, and four Lay Readers.

**Team Responsibility:** Adult Education. In this capacity, Fr Bernard has run Prayer Workshops, and holds monthly Bible Book Clubs, Julian meetings for silent prayer and Walsingham Cell Eucharists.



## Rev'd Noel McGeeney



Team Vicar of St. Leonard's, Heath and Reach; St. Michael's, Eggington; and St. Nicholas, Hockliffe. Fr Noel joined the Team in 2013. Noel was a missionary in Nigeria and Grenada for about 20 years, the last 8 of which he spent developing youth ministry in Nigeria. Formerly a Roman Catholic priest, he then spent a year as an associate priest in Norton Parish, Letchworth before being received into the Church of England.

**St. Leonard's, Heath & Reach:** Weekly 8 o'clock & 11.15 services, plus mid-week prayers and Eucharist.

A parent and toddler group, Little Fishes, is based in St Leonard's church hall across the cemetery from the church.

**St. Michael's, Eggington:** Fortnightly service for a dwindling and aging population. St. Michael's is in the process of becoming a Chapel of Ease of St Leonard's. The churchyard is kept neat by a working party, enabling a number of weddings to be held in the Church with receptions being held at nearby Eggington House.

**St. Nicholas, Hockliffe:** Weekly Sunday Worship is traditional, middle-of-the-road, village churchmanship, catering largely for an aging congregation. Special services and outreach activities are often well-received. Financially, St. Nicholas is, at present, barely solvent and last year received a ministry support grant. 10% of income is given to charitable causes.

**Team Responsibility:** Spiritual Growth and Direction, for which he runs quarterly Quiet Days and is initiating the Ministry of Healing.

## Rev'd Steve Marsh



Team Vicar of The Church of the Good Shepherd and St. Michael & All Angels, Billington. Fr Steve joined the Team in 2017 following a curacy in the Portsmouth diocese, having previously worked for BMW.

**The Church of the Good Shepherd** started 4 years ago, and is seeking to be a missional presence in the new housing estates springing up on the south and eastern sides of Leighton Buzzard. Informal and family focused Sunday gatherings are held in Greenleas School (Kestrel Way) on the Sandhills estate, and attract about 50 people, including children.

Junior Church for primary age children and Junior Church Plus for middle to secondary school age youth run alongside Sunday services twice a month, while once a month there is Messy Church alongside Café Church or an All Age gathering.

Various mission initiatives are being tried such as a recent Easter trail in the estate and a Messy Church World Cup event in the local community centre. This year there was also an Alpha course followed up with the 24/7 Prayer Course.

The church is leading a project to set up a bus-based youth work and community café initiative, in partnership with Scripture Union, the other Ouzel Valley churches and a few local trusts.

**St Michael & All Angels, Billington:** 14 - 20 people attend weekly services though villagers are very supportive of social & fund-raising events. The average age of the congregation could be described as mature, but this reflects the demographic of the village. Those who attend eagerly welcome children who come but unfortunately there is no separate space where they can go to receive suitable teaching. The church finances are sound but recently there has been a decline in income. 10% of income is given to charitable causes. A Friends group contributes to the upkeep of the church.

## IN SUMMARY

The Team would like the Team Rector to be someone who is able to:

- lead a diverse team of ministers by encouraging mutual support for the various challenging roles;
- encourage focus on the unifying message of the gospel by building an environment in which the churches are learning from one another through sharing teaching ideas and resources;
- build an environment where expertise can be shared to ensure that the best of each church supports the whole team;
- find areas in which the team could run ministries together that they couldn't do apart;
- help the team find a vision and a plan to bring Anglican worship to a new generation of worshippers within the growing population of the Ouzel Valley Team and provide the inspiration to make this happen.

The PCC of All Saints would like their new incumbent to be someone who:

- is comfortable and competent with a modern catholic style of worship, including vestments, incense and a well delivered musical element;
- is a person of prayer and catholic spirituality, and with a heart for the people;
- is willing and able to relate to the wider community and the civic authorities;
- can respond to the needs of a growing and changing community;
- has the skills to continue to offer All Saints as a training parish;
- very importantly, can have fun in the joy of the Christian Gospel.

***We very much hope that person could be you.***

*1 Corinthians 13 v 1-2*



## USEFUL LINKS

All Saints, Leighton Buzzard:	<a href="https://allsaintslb.org.uk/">https://allsaintslb.org.uk/</a>
St Barnabas, Linslade:	<a href="https://www.stbarnabaslinslade.uk/">https://www.stbarnabaslinslade.uk/</a>
St Leonard's, Heath & Reach:	<a href="https://saintleonardschurch.com/">https://saintleonardschurch.com/</a>
St Michael's, Eggington:	<a href="https://www.achurchnearyou.com/church/7703/">https://www.achurchnearyou.com/church/7703/</a>
St Nicholas, Hockliffe:	<a href="https://www.achurchnearyou.com/church/7705/">https://www.achurchnearyou.com/church/7705/</a>
Church of the Good Shepherd, Sandhills:	<a href="https://goodshepherdsandhills.org.uk">https://goodshepherdsandhills.org.uk</a>
St Michael & All Angels, Billington:	<a href="https://www.achurchnearyou.com/church/7697/">https://www.achurchnearyou.com/church/7697/</a>
Pulford School, Leighton Buzzard:	<a href="https://www.pulford.beds.sch.uk/">https://www.pulford.beds.sch.uk/</a>
St Leonard's VA Lower School:	<a href="https://www.stleonards.beds.sch.uk/">https://www.stleonards.beds.sch.uk/</a>
All Saints Preservation Trust:	<a href="https://www.allsaintspreservationtrust.org/">https://www.allsaintspreservationtrust.org/</a>
Diocesan Dashboard:	<a href="https://www.stalbans.anglican.org/diocese/dashboards/">https://www.stalbans.anglican.org/diocese/dashboards/</a>
Leighton Linslade Town Council	<a href="https://www.leightonlinslade-tc.gov.uk/">https://www.leightonlinslade-tc.gov.uk/</a>



All Saints, Leighton Buzzard

# THE ROLE OF TEAM RECTOR OUZEL VALLEY TEAM MINISTRY



**VICAR of ALL SAINTS  
LEIGHTON BUZZARD**